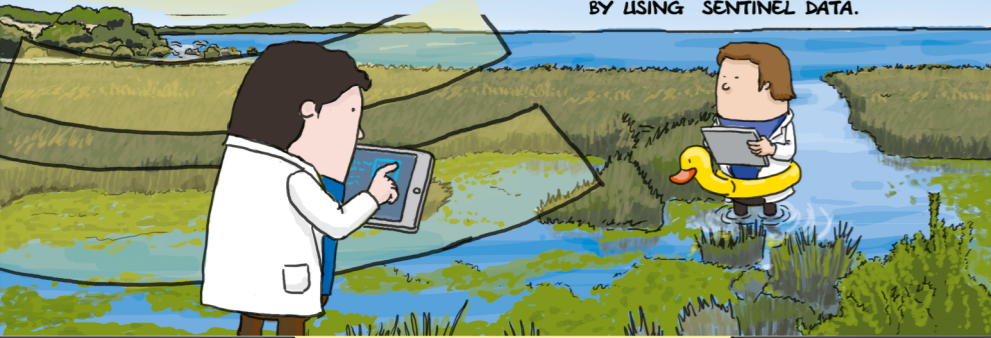


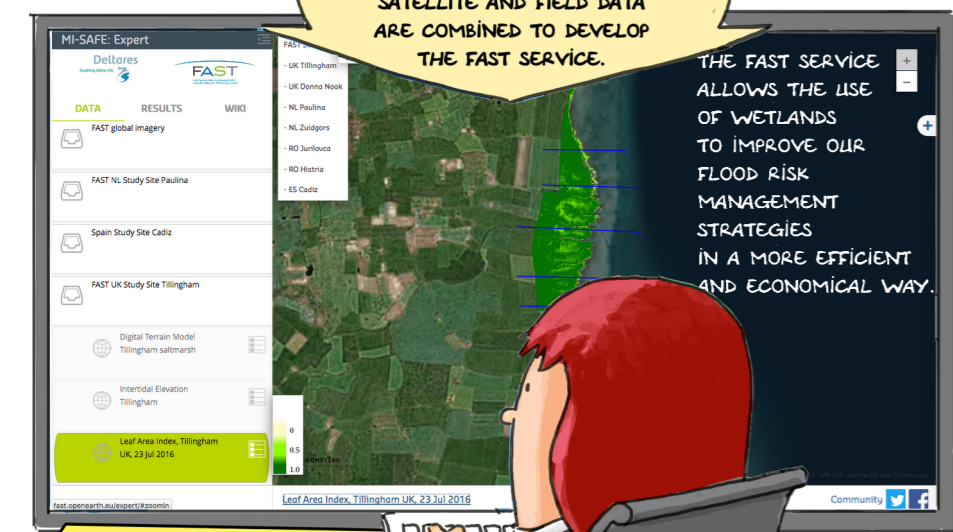
SENTINEL SATELLITES SEND IMAGES ALMOST EVERY DAY.

IN THE FIELD, WE MEASURE HOW WETLANDS PROTECT US FROM WAVES AND EROSION AND HOW THIS PROTECTION CAN BE DETECTED BY USING SENTINEL DATA.



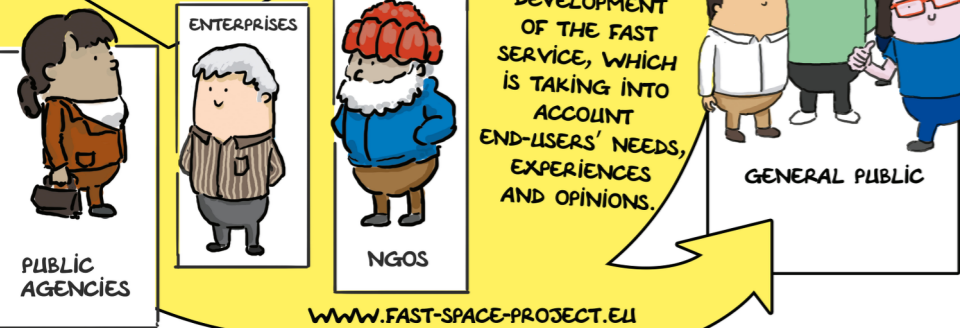
SATELLITE AND FIELD DATA ARE COMBINED TO DEVELOP THE FAST SERVICE.

THE FAST SERVICE ALLOWS THE USE OF WETLANDS TO IMPROVE OUR FLOOD RISK MANAGEMENT STRATEGIES IN A MORE EFFICIENT AND ECONOMICAL WAY.



FURTHERMORE, THE FAST SERVICE PROVIDES RESULTS TO END-USERS IN A LANGUAGE USEFUL FOR ENGINEERS AND MANAGERS, AND EASILY ACCESSIBLE TO THE GENERAL PUBLIC.

THESE END-USERS ACTIVELY PARTICIPATE IN THE DEVELOPMENT OF THE FAST SERVICE, WHICH IS TAKING INTO ACCOUNT END-USERS' NEEDS, EXPERIENCES AND OPINIONS.



WWW.FAST-SPACE-PROJECT.EU

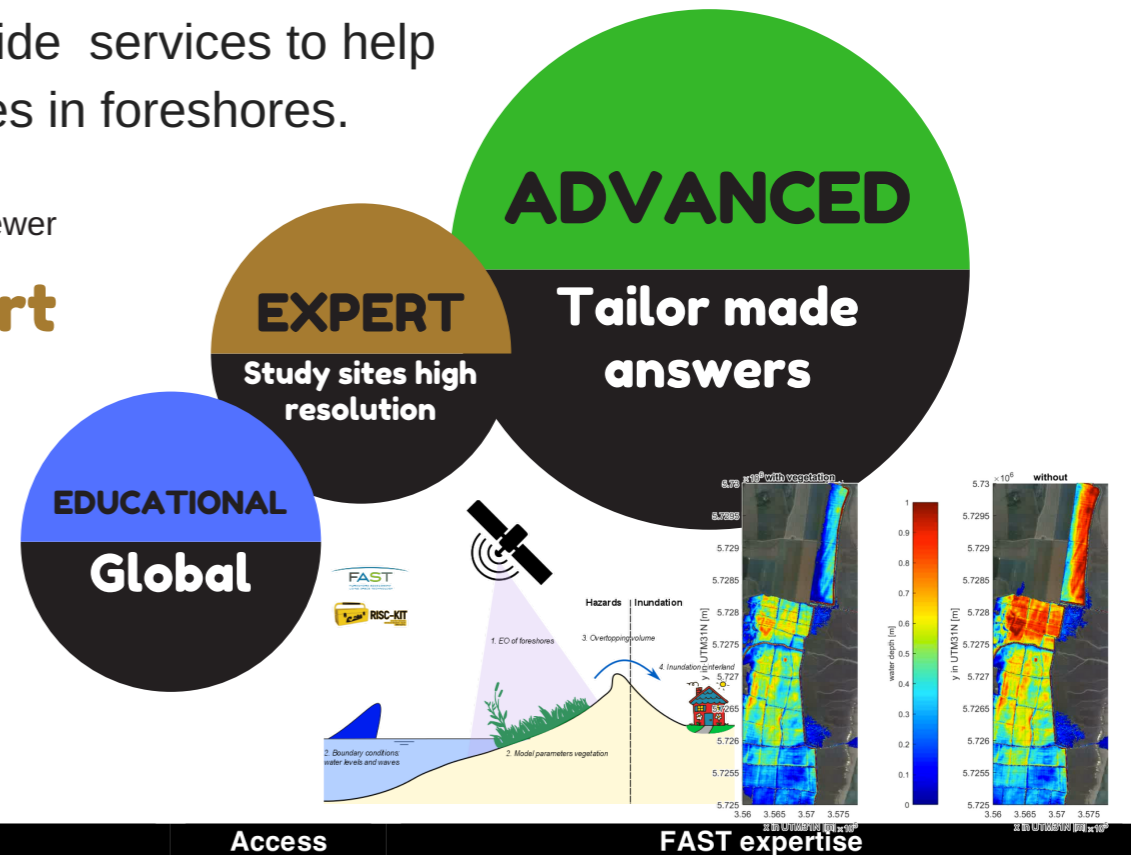
# MI-SAFE services and products fact-sheet

FAST is developing MI-SAFE to provide services to help design nature base flood risk strategies in foreshores.

MI-SAFE viewer

[fast.openearth.eu/expert](http://fast.openearth.eu/expert)

MI-SAFE includes a viewer to show the potential of foreshore wave attenuation and also gives an easy access to products and services generated by FAST.



MI-SAFE service description	Product/Service	Access	FAST expertise
<b>Bathymetry/topography OGC data</b>			
Global	SRTM15+, SRTM30	WMS/WCS	MI-SAFE viewer
Global intertidal elevations	FAST-IE		
Regional/Local topography	EMODNet	MI-SAFE Advanced	
Regional/Local topography: Land (10 - 1 km <sup>2</sup> )	Lidar, UAV, Ground-lidar, dGPS4		
<b>Vegetation OGC data</b>			
Global	FAST-GLC2009_VEG	WMS/WCS	MI-SAFE viewer
Europe	FAST-CLC2012_VEG		
Global/coast	FAST-Veg_GEE		
Local (10 - 1 km <sup>2</sup> )	FAST-NDVI, FASTLAI, UAV, Ground-Spectrometry, Ground-Sampling	MI-SAFE Advanced	
<b>Water level and wave statistics</b>			
Global/Coast water statistics	ERA-interim	WMS/WFS	MI-SAFE viewer
Regional/Local near-shore water modelled statistics	FAST-SWAN, FAST-XBEACH-VEG (1D and 2D)	MI-SAFE Advanced	
Local shallow water measured statistics	Ground-Measurements		
<b>OS Modeling</b>			
Open Source Modeling	XBeach with vegetation, Flexible integration using OGC data streams	OpenEarth / MI-SAFE Advanced	

MI-SAFE Advanced services may include: Data collection, review, quality check and support. Available on two formats: Consultancy and/or training